



515 N. Main Street | Hinesville, GA 31313
PO Box 649 | Hinesville, GA 31310
912.368.5212
www.mesack.com
ME Sack Engineering
@mesackengineering
mesack



ADDENDUM No. ONE

Date: June 12, 2023

Project: Mason Road Improvements, MES No. 2023-12

Engineer: M.E. Sack Engineering
Hinesville, Georgia

The original plans, specifications, and bid documents are amended to include the following:

Bid Form:

- Replace the previous Bid Form with the enclosed Bid Form.
Note an allowance has been made for additional fill.

Specifications:

- Replace the previous Section 01150 Measurement and Payment with the enclosed of the same.

The following clarifications are provided for questions received:

1. *Would you consider eliminating the prime requirement for the stone base?*
 - Prime may be eliminated from the required work scope.
2. *The contract time of 45 days will be difficult to meet, given the current shortage of stone base. Does the city have somewhere to stockpile stone base until the contractor can obtain all the necessary material and then start physical work on the project?*
 - We will consider a 45-day extension based on material shortage. The City will provide a stockpile area at the wastewater treatment plant off of Sims Road near the intersection of Sims and Ash Branch roads.

3. *Please clarify if the paving marking will be paint or thermo? There is specifications for both and it refers you back to the plans and the plans do not specify.*
- Painted striping is sufficient.
4. *Has the roadway been cored to determine the existing paving section and type of base?*
- The road is on a sand clay base.
5. *Only some of the trees are marked on the plans to be removed however there is a typical note next to the removal symbol. Is it the intent to clear the entire ROW?*
- We made every effort to identify significant trees. The goal and expectation is to clear the right of way of growth to avoid future root problems in the roadway. Plan to clear the right of way.
6. *It appears that some of the trees are directly over the existing water main. How are we to address this? Is stump grinding an option? Also what size is the existing WM?*
- The existing waterline is a 10" PVC main. We are providing record drawings with this clarification. We will consider grinding on a case-by-case basis where needed, so long as the stump is ground below surface elevation and the surface is clean and level for ease of maintenance in the future.
7. *The pavement section detail notes that unsuitable soils are to be removed as well as roots and organics. Would you consider including a bid item for the removal and replacement of unsuitable soils. Also please clarify the extent of root removal that will be required.*
- The goal is to remove the roots under the roadway. Since there is no rock currently, we expect that the roots and material lost will be replaced with rock. We are including an allowance for additional fill to be priced but will want to reduce it by as much as possible, therefore a maximum depth of 8" will be allowed. Tickets will be required for each load for payment.

-END-



B. BID FORM

Bid Item	Quantity	Units	Description	Unit Price	Cost
1	1,280	SY	Paved Roadway Removal	\$	\$
2	1,273	SY	6" Granular Roadway Base	\$	\$
3	885	CY	Unsuitable Soils Removal & Replacement	\$	\$
4	1,273	SY	2" 9.5mm Asphalt Paving	\$	\$
5	11	LF	24" Stop Bar	\$	\$
6	1,095	LF	4" Solid White Line Striping	\$	\$
7	510	LF	5" Double Yellow Line Striping	\$	\$
8	1	LS	Grading	-	\$
9	1	LS	Demolition	-	\$
10	1	LS	Erosion Control	-	\$
11	1	LS	Grassing	-	\$
12	1	LS	Shoulder Clearing & Grubbing	-	\$
13	1	LS	Traffic Control	-	\$
14	1	LS	Mobilization (5% Max)	-	\$
				TOTAL BID	\$

**SECTION 01150
MEASUREMENT AND PAYMENT**

PART 1 - GENERAL

1.01 QUANTITIES

- A. Quantities: Quantities listed in the Proposal are approximate only and are intended to serve as a guide in comparing bids, and may be increased or decreased without invalidating the unit price bid.
- B. Payment: Contractor shall be paid for actual in place quantities as determined by the Engineer field measurements.
- C. Discrepancies: In case of discrepancies between the figures shown in the unit prices and totals, the unit prices shall apply and the totals shall be corrected to agree with the unit price.

PART 2 - MEASUREMENT AND PAYMENT

2.01 PAVEMENT REMOVAL AND REPLACEMENT

- A. Measurement: Measurement shall be made on the basis of each square yard of pavement restored in accordance with the Contract Documents based on the centerline length of the pipe and the width of the pavement restored or the width of the trench specified plus two feet, whichever is less.
- B. Payment: Payment will be made on the basis of the unit price stated in the bid. the work shall include, but is not limited to:
 - 1. Marking, cutting, and removal of pavement material as necessary.
 - 2. Trench maintenance and crusher run stone as required to maintain level traffic surface during construction period and compaction of trench.
 - 3. Finish and install asphalt patch in accordance with City of Pembroke Standard Specifications if on city street or in accordance with plans.
 - 4. Complete surface restoration and cleanup.

2.02 GRANULAR ROADWAY BASE

- A. Measurement: Measurement shall be made on the basis of the number of square yards of graded aggregate base applied to the parking lot and roadway at the specified thickness as shown on the construction plans. Irregular areas such as turnouts, filler strips and intersections will be measured to the closest square yard. Prior to installation of the asphalt all areas will be checked for proper thickness.
- B. Payment: Payment will be made on the basis of the number of square yards of granular crusher run (graded aggregated) base at the specified thickness applied to the roadway at the unit price stated in the bid. The price shall include all labor, equipment and material to complete the task. Work shall include, but not be

limited to, the furnishing, hauling, placing and compaction of the crusher run base in order to bring the base to the lines, grades, and cross sections shown on the construction plans or established by the Engineer.

2.03 UNSUITABLE SOILS REMOVAL AND REPLACEMENT

- A. Measurement: Measurement shall be made on the basis of each cubic yard of soil applied to the roadway at the specified thickness as shown on the construction plans. Irregular areas such as turnouts, filler strips, and intersections will be measured to the closest cubic yard. Prior to installation of new materials, all areas will be checked for proper thickness.
- B. Payment: Payment will be made on the basis of the number of cubic yards of soil at the specified thickness applied to the roadway at the unit price stated in the bid. The price shall include all labor, equipment, and material to complete the task. Work shall include, but is not limited to, the furnishing, hauling, placing, and compaction of the new material in order to bring the base to the lines, grades, and cross sections shown on the construction plans or established by the Engineer.

2.04 ASPHALT PAVING

- A. Measurement: Measurement will be made on the basis of each ton of asphalt in place, in accordance with the construction plans and accepted by the Engineer. Actual weight will be determined by weighing on a certified motor truck scale and presenting a notarized copy of the recorded weight to the Engineer.
- B. Payment: Payment will be made on the basis of the number of tons of asphalt in place in accordance with the unit price bid as stated in the contract. Work shall include, but is not limited to, the furnishing, hauling, placing and compaction of the asphalt in order to bring the pavement to the lines, grades and cross sections as designated on the construction plans and as determined by the Engineer. The unit price bid shall also include surface cleaning, prime, tack and pavement and handicap striping. All striping will be in accordance with MUTCD and local specifications.

2.05 PAVEMENT MARKING

- A. Measurement: Measurement shall be made on the basis of the percent complete of the lump sum bid.
- B. Payment: Payment shall be made at the lump sum stated in the bid. The price bid shall include all labor, materials, and equipment necessary to complete the task. The task shall include, but is not limited to, supplying, and installing all pavement markings to replace existing in accordance with construction plans, surface restoration, and cleanup.

2.06 GRADING

- A. Measurement: Measurement will be made on the basis of the percent complete of the item of work. All cut and fill quantities are based on the difference between initial topographic data and proposed contours shown on the plans.

- B. Payment: Payment will be made at the price bid for each item. Work shall include all equipment, labor and material to complete each task. This item will include, but is not limited to, excavation, material transportation and placement, grading to the lines and grades shown on the plans, compaction and stabilization.

2.07 DEMOLITION

- A. Measurement: Measurement shall be made on the basis of the percentage completed item in accordance with the plans, specifications and bid documents.
- B. Payment: Payment will be made on the basis of the completed item of work. The lump sum price shall include furnishing all labor, materials and equipment necessary to complete this item of work. Work shall include, but is not limited to, removal of any storm pipe, drainage structures, rip rap, or other material that exist and will not be used as part of this project, excavation, disposal at an approved site, backfill, compaction and surface restoration.

2.08 GRASSING

- A. Measurement: Measurement shall be made on the basis of the completed item in accordance with the construction plans and bid items.
- B. Payment: Payment will be made in accordance with the price stated in the bid. The unit price shall include, but is not limited to, furnishing all labor, materials and equipment necessary for the satisfactory growth of grass on all disturbed areas in accordance with plans and specifications. Work shall include, but not be limited to, furnishing all materials, fertilizer, soil samples, grass seed, raking, leveling, watering, maintenance and final surface restoration. Final payment will not occur until permanent grass is established.

2.09 CLEARING & GRUBBING

- A. Measurement: Measurement shall be made on the basis of the percentage complete of the task in accordance with the plans and specifications.
- B. Payment: Payment will be made at the lump sum stated in the bid. The price bid shall include furnishing all labor, materials and equipment necessary to complete this item. Work shall include, but is not limited to, removal of all trees, shrubs and undergrowth that presently exist, preventing the construction of this project. All material removed including vegetation, roots and organic mat shall be removed from the site and disposed of at a permitted site. The contractor shall take special care not to disturb the roots of trees that are marked to remain. Trees to be saved shall be marked and approved by the engineer prior. Trees to be saved shall have the appropriate tree protection installed.

2.10 TRAFFIC CONTROL

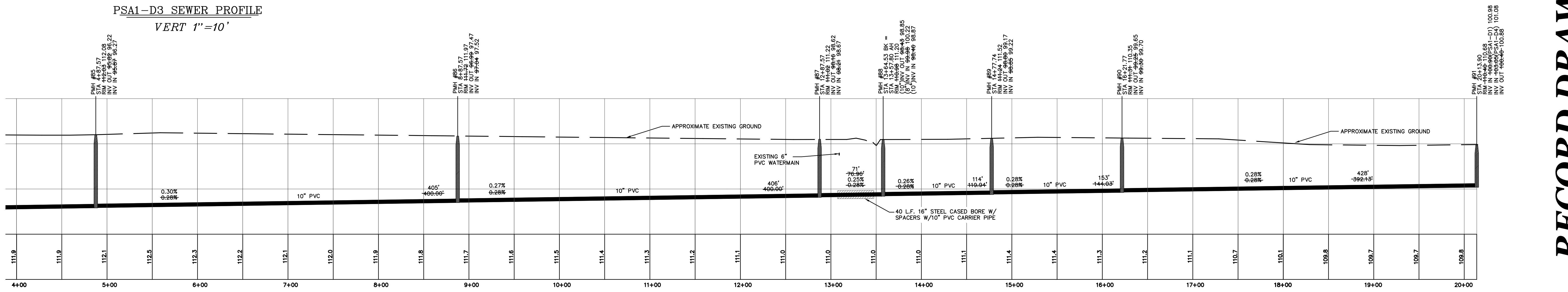
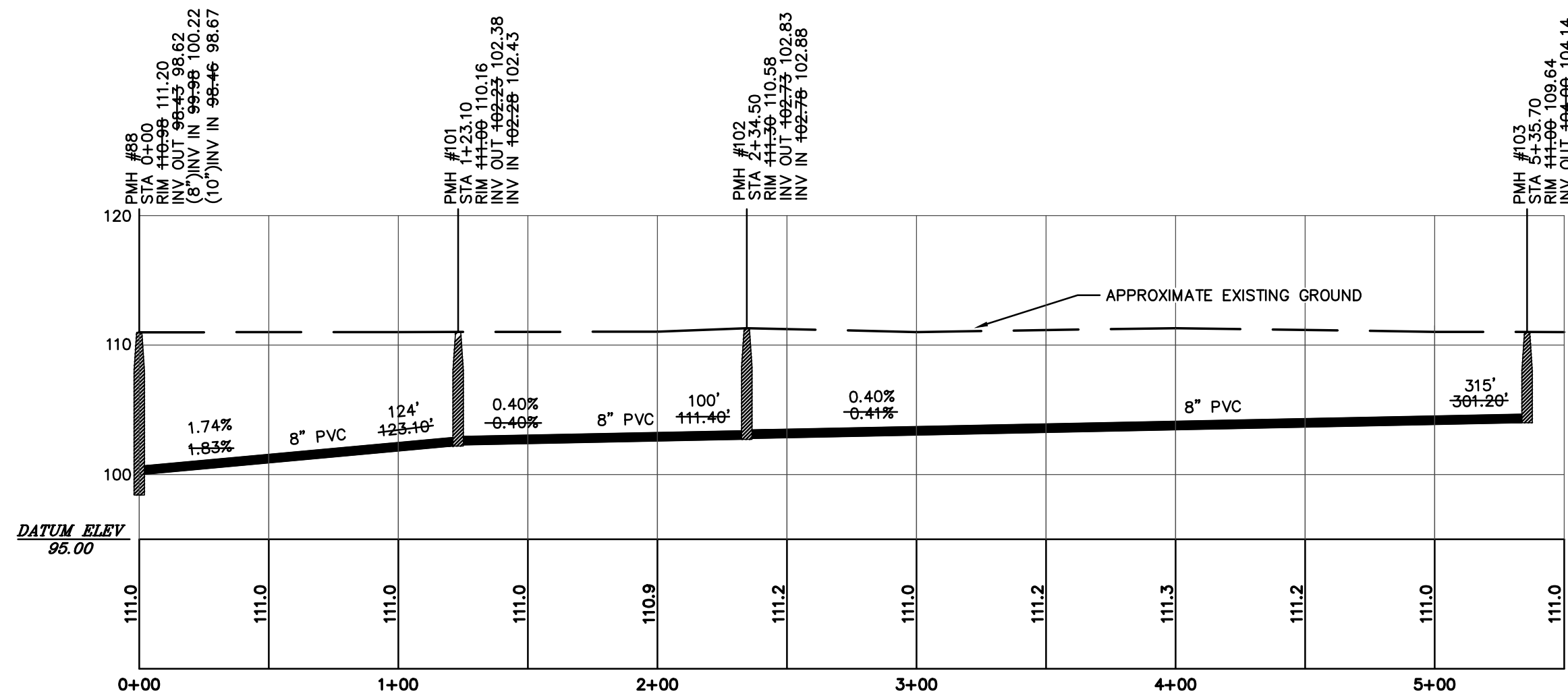
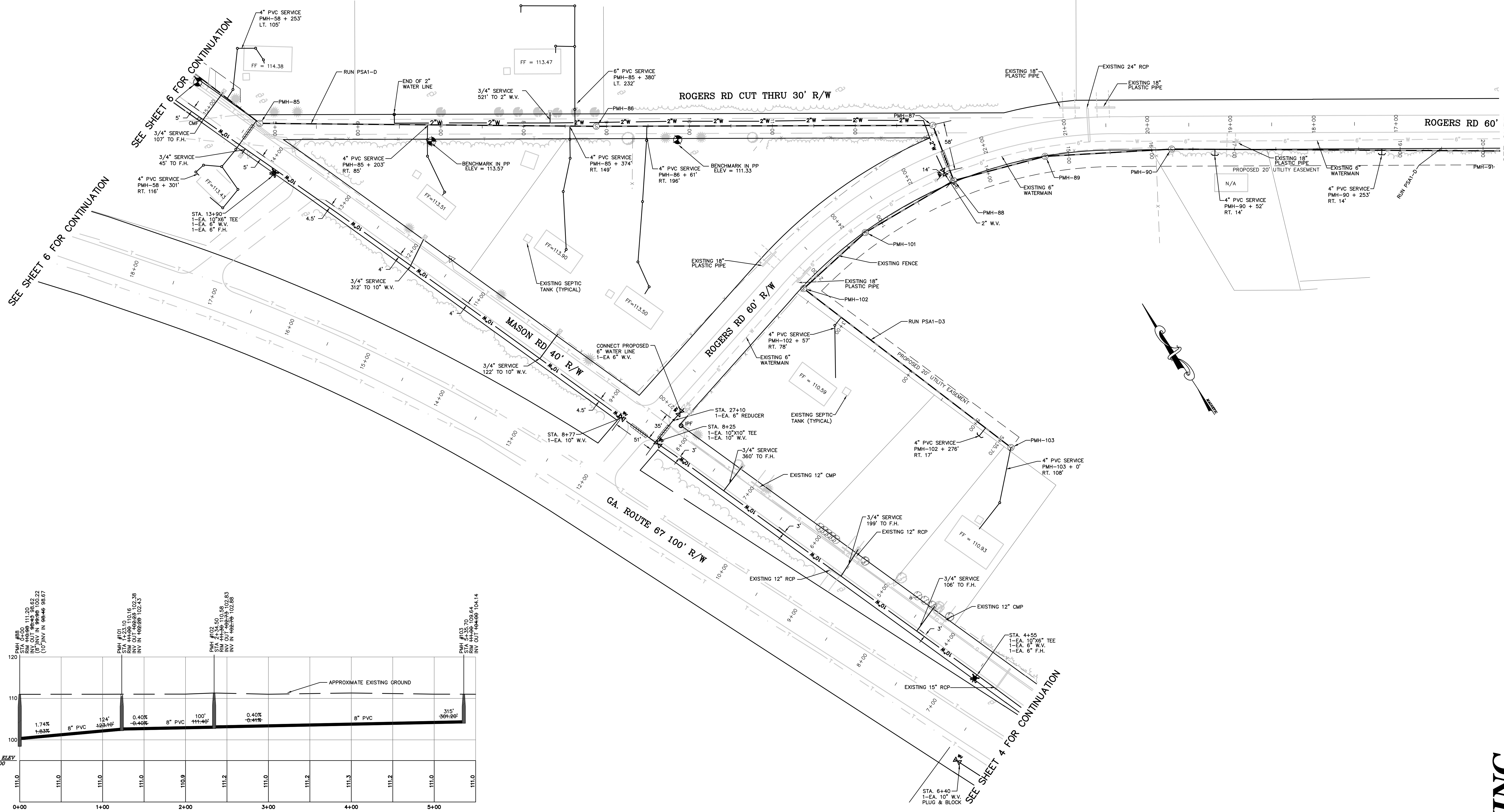
- A. Measurement: Measurement shall be made on the basis of the percentage complete of the lump sum bid in accordance with the construction plans and bid items.

- B. Payment: Payment shall be made on the basis of the percentage complete of the lump sum price stated in the bid as determined by the project engineer. The lump sum shall include furnishing all labor, materials, and equipment necessary to complete the task. The task shall include, but is not limited to, the placing, moving, and maintenance of all signage, barricades, cones, barrels, flagging, flag men, and guide vehicles throughout the construction process to safely reroute traffic from existing traffic patterns. Traffic control shall be done in a manner to safely warn, reroute, and lead vehicles to their destination. Additional signage will be required if the engineer deems that the traffic control in place does not fully meet the required intent of the task. Changing of existing traffic patterns shall be communicated with the engineer no less than 48 hours prior to.

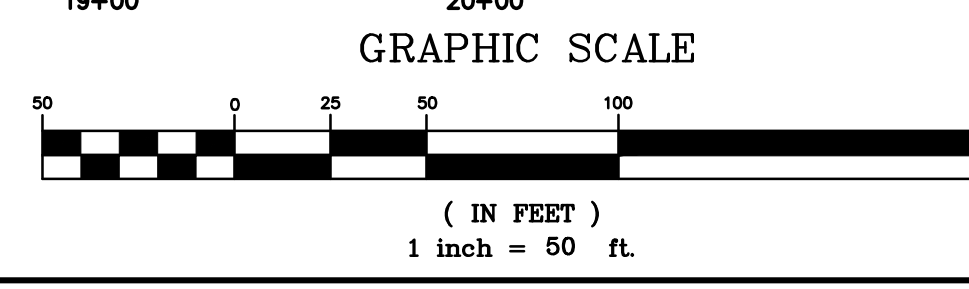
2.11 MOBILIZATION

- A. Payment will be made for the price as stated in the Contract once the Contractor has established his construction yard, and met the requirements established in the Contract Documents. Mobilization will be recognized complete once the Contractor has provided a construction schedule and moved his equipment and a substantial amount of material to the job site. Construction must be underway and progressing. Payment for mobilization will be limited to a maximum amount not to exceed 5% of the bid price.

END OF SECTION



PSA1-D SEWER PROFILE
VERT 1"=10'



RECORD DRAWING

Water & Sewer System Expansion
 CDBG# 07P-X-015-2-3340
 for
 City of Pembroke, Bryan County, Georgia

Water & Sewer
 Plan & Profile
 DATE: JANUARY 24, 2008
 FILE NO: 2007-28PRJ 3D
 SHEET: 5



309 NORTH MAIN STREET
 HINESVILLE, GA 31033
 TEL: (912) 368-5212
 080 PARKSIDE COMMONS
 SUITE 101
 GREENSBORO, GA 30642
 TEL: (706) 454-0870

P.C. Simonton & Associates, Inc.
 Consulting Engineers

THIS DRAWING IS AN INSTRUMENT OF SERVICE AND REMAINS THE PROPERTY OF P.C. SIMONTON & ASSOCIATES, INC. IT MAY NOT BE REPRODUCED OR TRANSMITTED IN ANY FORM OR BY ANY MEANS, ELECTRONIC OR MECHANICAL, INCLUDING PHOTOCOPYING, RECORDING, OR BY ANY INFORMATION STORAGE AND RETRIEVAL SYSTEM, WITHOUT THE WRITTEN PERMISSION OF P.C. SIMONTON & ASSOCIATES, INC. THE INFORMATION CONTAINED HEREIN IS FOR GENERAL INFORMATION ONLY AND DOES NOT CONSTITUTE A CONTRACT. THE INFORMATION CONTAINED HEREIN IS THE PROPERTY OF P.C. SIMONTON & ASSOCIATES, INC. AND IS NOT TO BE USED FOR ANY OTHER PROJECT WITHOUT THE WRITTEN PERMISSION OF P.C. SIMONTON & ASSOCIATES, INC. COPIES WILL TAKE PRECEDENCE OVER ANY ELECTRONIC MEDIA.

REVISIONS: MARCH 8, 2010 RECORD DRAWING
 DRAWING COMPLETED BY:
 SEE SHEET 4 FOR CONTINUATION
 SEE SHEET 6 FOR CONTINUATION